



Crisis Management Association

1,6 χιλ. "Μου αρέσει!" • 1,7 χιλ. ακόλουθοι



Μήνυμα

Μου αρέσει!

Αναζήτηση

Δημοσιεύσεις

Πληροφορίες

Ονομαστικές αναφορές

Κριτικές

Ακόλουθοι

Φωτογραφίες

Περισσότερα

Δημοσιεύσεις

Φίλτρα



Crisis Management Association

21 Δεκεμβρίου 2020

POSITIVE PARTNERSHIP

We are delighted to announce our partnership with SAFAR! Information is a vital empowerment tool for our beneficiaries - and this is SAFAR's key focus. SAFAR's latest action will be to launch a new application which will ensure reliable information is shared in real-time with refugees and asylum seekers.

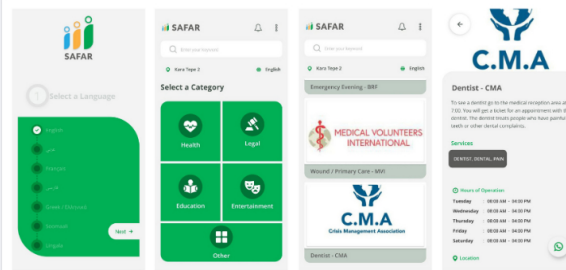
The information provided comes in 7 different languages (English, Farsi, Arabic, French, Lingala, Somali and Greek) and is updated and translated weekly. This ensures that both refugees and actors in the new camp always have the correct information about working hours, locations, services offered and access routes.

With many languages spoken, and disinformation all around, it is difficult for refugees in the new camp to understand the services available to them. Together with SAFAR, we want to make sure that those in need know which medical services operate in Lesvos. Knowledge like this can improve lives.

The app will be launched this week and we fully support this action! SAFAR's ambition to quickly and efficiently connect refugees with relevant health care providers is vital to ensure the vulnerable can access the services they need. We encourage you to download and share the app:

<https://play.google.com/store/apps/details?id=com.Safar...>

More information: <https://www.safarapp.org>



13

1 κοινοποίηση

Μου αρέσει!

Σχόλιο

Κοινοποίηση



Γράψτε ένα σχόλιο...



Crisis Management Association

18 Δεκεμβρίου 2020

CMA's Winter Fundraiser

Today we are launching our winter fundraiser. Please help us to raise money so that we can continue providing vital healthcare this winter! This has been a really tough year, we need you to help us make the situation a little bit easier for refugees in Lesvos at the end of 2020.

Since September, we have been on hand to provide essential medical care, coordination and translation services, the crisis still continues but we will help for as long as we are needed.

Please support our medical and dental programmes this winter. Our target is to raise €10,000 in a month! Your donations will ensure the most vulnerable refugees

are identified and treated with care and dignity. You will also help us make sure COVID cases are recognised early to stop the spread. You can support those who need to be transferred to safer living conditions for their necessary medical treatment. Finally, your donation will keep our Emergency Dental Clinic open for our patients in the new camp.

In what may be the most challenging winter for refugees on Lesbos, your support is critical. Your kindness helps our vital medical programmes and gives us motivation by reminding us we are not alone in this humanitarian crisis.

<https://chuffed.org/.../cma-emergency-medical-response...>



CHUFFED.ORG

CMA's Emergency Medical Response for Refugees on Lesbos

Healthcare systems to protect vulnerable populations...

24

9 κοινοποιήσεις

Μου αρέσει!

Σχόλιο

Κοινοποίηση

Γράψτε ένα σχόλιο...



Crisis Management Association

15 Δεκεμβρίου 2020 · 🌐

Dental clinic update

As most of us know, living with excruciating dental pain is difficult for anyone. For those forced into the new camp in Lesbos, it makes unbearable living conditions impossible.

This is why we are delighted to give a warm welcome to Dr Anna-Lena and Peter today. With a small CMA team at present, they are an essential support to us. All week they will treat refugees and asylum seekers in desperate need of dental care in our clinic!

This is their first experience working in a refugee camp and they admit they were not aware of how challenging and undignified the conditions are.

Dr Anna-Lena will also deliver an expert training to CMA on treating patients with a disability. We are extremely grateful for Anna-Lena and Peter's dedication, support and offer of capacity building. Thank you!

Do you want to help refugees in Lesbos? We are still looking for qualified dentists to join us on the ground from January 18th-24th.

To apply: dental@crisismanagementassociation.com

To find our more: <https://crisismanagementassociation.com/dental-project>



21

1 σχόλιο 3 κοινοποιήσεις

Μου αρέσει!

Σχόλιο

Κοινοποίηση

Γράψτε ένα σχόλιο...

Omario Sing
What a life please
Μου αρέσει! Απάντηση 2 χρ.

Crisis Management Association
13 Δεκεμβρίου 2020 · 🌐

🚨 URGENT NEED! Please Share! 🚨

C.M.A is calling for qualified doctors, nurses and general volunteers to join our medical team on Lesbos starting immediately. We need your skills to provide critical care to refugees this winter.

Help us spread the word at this crucial time

✉ To volunteer email medical@crisismanagementassociation.com

🌐 Visit our website
crisismanagementassociation.com



👍❤️ 28 12 σχόλια 15 κοινοποιήσεις

👍 Μου αρέσει! 💬 Σχόλιο ➦ Κοινοποίηση 🌐

Γράψτε ένα σχόλιο...

Nina Sandqvist
Hi! I'd love to help but i do not have any medical skills so i'd love to help as a general volunteer if that is in some way possible?
Μου αρέσει! Απάντηση 2 χρ.

📎 Συντάκτης
Crisis Management Association
Nina Sandqvist thank you for your message! General volunteers are definitely welcome, you can send us an email: greece@crisismanagementassociation.com
Μου αρέσει! Απάντηση 2 χρ.

Rosie Staples
Rachael Kidner
Μου αρέσει! Απάντηση 2 χρ.

Samantha Martens
Brenda Olla Joyce
Μου αρέσει! Απάντηση 2 χρ.

Brenda Olla Joyce
No
Μου αρέσει! Απάντηση 2 χρ.

Samantha Martens
Brenda Olla Joyce oh Brenda lol love your positivity
Μου αρέσει! Απάντηση 2 χρ.

Brenda Olla Joyce
Oh Samantha yes certainly what you have always wanted to do. Just don't think the best time
Μου αρέσει! Απάντηση 2 χρ.

Απαντήστε στο χρήστη Samantha Martens...

Liesbeth Post
Midwifery?
Μου αρέσει! Απάντηση 2 χρ.

📎 Συντάκτης
Crisis Management Association
Hi Liesbeth, at the moment we're not looking for midwives. **Starfish Foundation - Help for refugees on Lesbos** however is looking for midwives for their breast feeding program.
Μου αρέσει! Απάντηση 2 χρ. Τροποποιήθηκε

Luke Whitaker
UK EMTs/Paramedics?
Μου αρέσει! Απάντηση 2 χρ.

📎 Συντάκτης
Crisis Management Association
Hi Luke, at the moment we're not looking for paramedics. MVI, **Medical Volunteers International e.V.**, works alongside with us in the camp and they are looking for paramedics.
Μου αρέσει! Απάντηση 2 χρ. Τροποποιήθηκε

Luke Whitaker
Crisis Management Association Thanks very much for your...

response. I appreciate it. If you are at any point, I'd be interested.

Μου αρέσει! Απάντηση 2 χρ.

Γράψτε ένα σχόλιο...



Crisis Management Association

10 Δεκεμβρίου 2020 · 🌐

Thank You!

When we first started working in the new camp, all medical actors were based in tents. These were inefficient to work in, impossible for us to store medicines or set up equipment in, and prevented us from providing our patients with a space they felt comfortable in.

Over the past 3 months, we've been pleased to see how the medical area has developed. With the completion of the Rub Hall, CMA along with the other medical actors now have improved conditions in which to care for our beneficiaries. It's a significant step up but it presents us with new challenges to continue operating at the highest standard for those who deserve quality treatment in positive spaces.

Quality medical equipment is costly and hard to come by but, for our operations, it is vital so our beneficiaries receive the best care possible. We were devastated to lose our previous equipment during the September fires but we were lucky to have close links with other NGOs who supported us during that time.

Today we want to say a huge thanks to [Volunteers for Humanity](#) who generously donated medical equipment to us - including some excellent examination beds!! This donation was facilitated by our amazing friends at [Refugee 4 Refugees](#) This is a shout out to you both for supporting us to equip our clinics and constantly upgrade our operations. You've made it possible for us to make our patients as comfortable as they can be.



👍❤️ 13



Μου αρέσει!



Σχόλιο



Κοινοποίηση



Γράψτε ένα σχόλιο...



Crisis Management Association

7 Δεκεμβρίου 2020 · 🌐

Dental clinic update |

"This trip feels like coming home"

Today CMA is delighted to welcome back one of our long time supporters - Dr Heike!

Dr Heike and her family have provided dental care to refugees in Lesvos for several years and, whilst here on the island with us, have become part of our family. Many of CMA's team have lived on Lesvos for a long time, and have always appreciated Dr Heike's amazing commitment to camp residents.

Her powerful words remind us that, for most people, humanitarian action is not only a profession, it is also a livelihood and a life choice. We are grateful to Dr Heike for the work she does and the sense of duty she feels. We can't wait to work with Dr Heike to provide essential dental care, compassionate pain relief and kind healthcare to our patients.

Thank you Dr Heike for your dedication to the health and well-being of refugees.





17

1 κοινοποίηση

Μου αρέσει!

Σχόλιο

Κοινοποίηση

Γράψτε ένα σχόλιο...



Ο χρήστης **Crisis Management Association** είναι με το χρήστη **Anne Boomsma**.

6 Δεκεμβρίου 2020 · 🌐

VOLUNTEERS NEEDED

C.M.A is currently looking for long-term volunteers to join our team. We offer accommodation and transportation and depending on the role a monthly stipend. Are you available for 3 months or more to work in Kara Tepe 2 camp in Lesvos, Greece? And are you motivated to support our medical and dental operations and being part of creating and improving the overall health care system?

We are looking for:

- * Clinic Lead Dental
- * Assistant Coordinator
- * Volunteers medical operation

www.crisismanagementassociation.com

greece@crisismanagementassociation.com



35

7 σχόλια 67 κοινοποιήσεις

Μου αρέσει!

Σχόλιο

Κοινοποίηση

Τα πιο σχετικά ▾

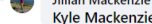
Γράψτε ένα σχόλιο...



Kyle Mackenzie

Jillian Mackenzie

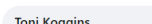
Μου αρέσει! **Απάντηση** 2 χρ.



Jillian Mackenzie

Kyle Mackenzie oooo will have a look xx

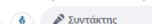
Μου αρέσει! **Απάντηση** 2 χρ.



Toni Koggins

Can I volunteer during covid period in Greece? I can help as general volunteer...

Μου αρέσει! **Απάντηση** 2 χρ.



Συντάκτης

Crisis Management Association

Toni Koggins any volunteers who join us from outside Greece must be essential to our program needs that we have not been able to find in the camp community or on the island already. They will also be required to follow the current rules regarding Covid 19 set by the Greek government. If you are interested in volunteering with us please send an email to the address above, we also accept remote volunteers for certain parts of our operation. Kind regards, CMA team.

Μου αρέσει! **Απάντηση** 2 χρ.



Princes Sherifat

How can I join thankd

Μου αρέσει! **Απάντηση** 1 χρ.

Γράψτε ένα σχόλιο...



Crisis Management Association

2 Δεκεμβρίου 2020 · 🌐

Thank you |

We work in a challenging and demanding environment, days can be long and hard with many obstacles to overcome and sudden changes to react to. This makes it all the more important to work alongside other organisations and support each other to keep going and provide the best services we can for the camp residents.

This week we want to say a big CMA thank you to one of our biggest supporters.

Refugee 4 Refugees have kept by our side since we first decided to create CMA

Refugee 4 refugees have been by our side since we first decided to create CMA, always there to provide support, volunteers and advice whenever we have needed it. R4R's help enabled us to get our medical projects up and running in the aftermath of the fire and the hands on support of some R4R team members has enabled us to increase our capacity and improve our response to issues in the camp.

We want to highlight in particular the ceaseless support we've had from 2 members of R4R. One volunteer has supported us in our medical program in the camp, carefully registering patients and managing appointments to ensure that everything runs smoothly for the refugees in need. The other team member has provided a huge amount of support to develop our online presence, help with policy writing and our communications strategy. As a new NGO this hands on help has been key to building up a support base and finding volunteers and donors for our projects.

We are hugely grateful to Refugee 4 Refugees for being there for us and for being committed to our partnership. Together we will work in order to support refugees and asylum seekers in Lesvos.



20

Μου αρέσει!

Σχόλιο

Κοινοποίηση

Γράψτε ένα σχόλιο...



Crisis Management Association

30 Νοεμβρίου 2020 · 🌐

Dental Clinic Update]

Refugees regularly face long waits for medical treatment. Our patients will have likely waited too long for dental care, with some experiencing excruciating pain in the in-between. For camp residents, untreated dental pain can make unbearable living conditions even harder.

We constantly look to increase capacity to offer more appointments and provide pain relief to those in need. This week, we're delighted to have 2 dentists in our team who have boosted our ability to respond! In our new, bigger clinic, we can now treat 2 patients at the same time, meaning we can halve the number of people suffering dental pain every day.

It's brilliant to have Dr Angelika and Dr Simone here with us now and, with their hard work and enthusiasm, we have doubled the number of patients we see. Thank you both for being with us and building CMA's capacity, your skills enable us to continue supporting refugees in the new RIC with kindness.

Do you want to help refugees in Lesvos? We are still looking for qualified dentists to join us on the ground from December 25th-30th.

To apply email: greece.cma@gmail.com

To find our more visit <https://crisismanagementassociation.com/dental-project>



19

2 σχόλια 2 κοινοποιήσεις

Μου αρέσει!

Σχόλιο

Κοινοποίηση

Τα πιο σχετικά ▾

Γράψτε ένα σχόλιο...



Ivan Wanja

Hey, I know a dentist from Germany interested in helping out, would that be of any interest for you? Send me a P.M.

Μου αρέσει! Απάντηση 2 χρ.

Συντάκτης

Crisis Management Association

Dear Ivan, thank you so much for reaching out to us and our apologies for our late reply! We will contact you through a PM.

Μου αρέσει! Απάντηση 2 χρ.



Crisis Management Association

28 Νοεμβρίου 2020 · 🌐

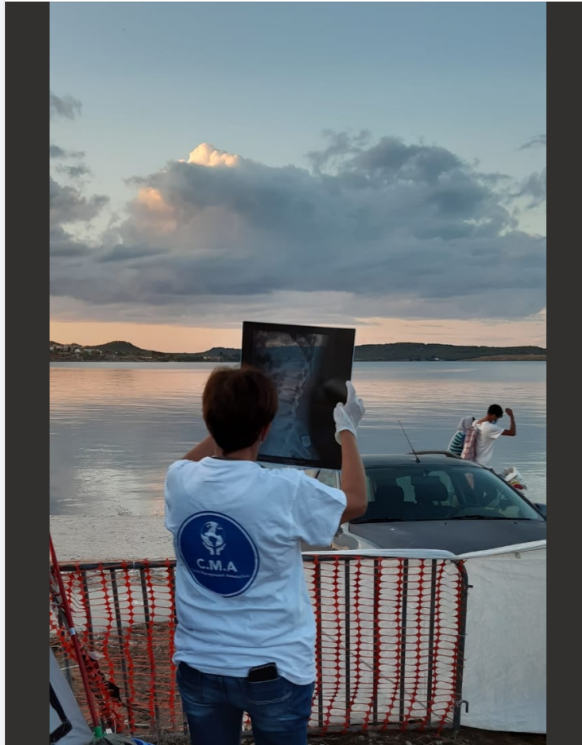


Medical program update

Today we want to highlight the incredible service of our Greek medical team who are vital to our operations in Lesvos! As part of CMA, our Greek doctors and nurses have provided essential healthcare support for vulnerable populations in the new camp, working in solidarity with our international volunteers and staff.

We consider ourselves lucky to work with Lesvos professionals and are delighted that they chose to commit to us! With their medical skills, and understanding of the local health context, we are better able to provide high quality medical care when those at-risk need it most. It is our vision to ensure sustainable healthcare systems that positively impact the local environment.

It is a pleasure to work alongside our Greek colleagues and friends and we believe long lasting success must involve the Lesvos community. Thanks to our local staff for joining us with a humanitarian spirit and sharing in our vision to provide medical interventions for the most vulnerable.



👍 17

3 σχόλια 2 κοινοποιήσεις

👍 Μου αρέσει!

💬 Σχόλιο

🔗 Κοινοποίηση



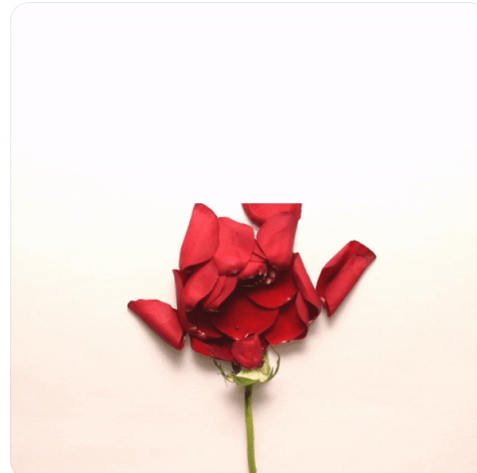
Τα πιο σχετικά ▾



Γράψτε ένα σχόλιο...



Efi Mouflouzelli



Μου αρέσει! Απάντηση 2 χρ.



Bashir Ahmad Mohammadi
Amazing pic



Μου αρέσει! Απάντηση 2 χρ.

👤 Συντάκτης

Crisis Management Association

Thank you Bashir!

Μου αρέσει! Απάντηση 2 χρ.

Γράψτε ένα σχόλιο...



Crisis Management Association

25 Νοεμβρίου 2020 · 🌐

One of the biggest challenges we face is to ensure our clinics are fully stocked at all times. Having easy access to everything our patients could need is vital so we can be flexible in our medical response. Chronic illnesses sometimes require specific and hard to source medicines - these can be expensive to buy but are essential to administer.

At this time, we want to say a huge thank you to [HELP International](#) for their generous donations to CMA which have helped us restock our pharmacy and fully furnish our new camp clinics. Help International have also enabled us to newly hire a psychiatrist as part of our field medical team. This position fills a major gap and is such an important addition, allowing us to bring a new beneficiary service.

We appreciate every single offer of support - small or large, financial or in person. We thank you for ensuring we can continue to work hard and commit to medical care at the most crucial times. Your helps keeps us here and we and we will do our best to deliver the highest service for the people in need.

Photos by Ali Hashemi



👍 15

👍 Μου αρέσει!

💬 Σχόλιο

🔗 Κοινοποίηση



Γράψτε ένα σχόλιο...



Crisis Management Association

23 Νοεμβρίου 2020 · 🌐

Dental Clinic Update:

CMA wants to share some exciting news from last week! After two months working out of a modified mobile gynaecological unit, we have now moved into our permanent base for the dental clinic!!

We now work inside an ISO box fixed within the medical area of the new RIC Lesvos. The space increases our efficiency as, with two clinic rooms, we can treat double the amount of patients! Our safe storage space also means we no longer have time wasted collecting vital supplies from our storage container. With a brand new sterlisation room, we continue to ensure hygiene is of the topmost standard.

In the future, we plan to install an X-Ray unit, this massive upgrade will allow us to increase our outreach and provide a wider patient service. To support as many vulnerable populations as possible - in the safest, most compassionate way - is our total focus.

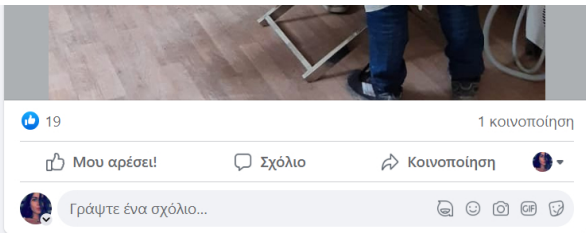
CMA sends thanks to everyone involved in our new container installation - without you we could not have set up the clinic so quickly. We also want to thank the EODY for kindly lending us the previous unit from which we worked - this directly benefitted our beneficiaries who we could care for in our initial months.

Our team is ready and raring to go! Can you support us with hands on the ground? We are still looking for qualified dentists to join us on the ground from December 25th-30th.

To apply email: greece.cma@gmail.com

To find our more visit <https://crisismanagementassociation.com/dental-project>





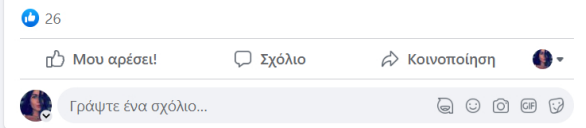
Crisis Management Association

18 Νοεμβρίου 2020 · 🌐

Winter is setting in on Lesbos, the temperature is dropping fast and the days are ever-shorter. The challenging conditions caused by crippling cold weather means refugees in the camp need our compassionate healthcare more than ever.

We have been able to provide much needed medical treatment thanks to the support of the amazing [Hands on Global, Inc.](#) This group of dedicated doctors and nurses have visited the island many times over the years providing urgent care in critical times.

We are deeply honoured to work alongside such a loving and skilled professional group. Their hands on support, medical donations, supplies and financial contributions mean we can continue to be there for the most vulnerable camp residents who are unable to escape this extreme weather. Thank you Hands on Global for everything you do for the refugees of Lesbos!



Crisis Management Association

16 Νοεμβρίου 2020 · 🌐

Ensuring all refugees on Lesbos have access to dental care is a huge challenge for us. As not all are housed in the new RIC, we had to problem solve how to treat those who cannot reach CMA's camp clinic. With our fully mobile dental clinic, we can now pack our supplies away and move to any location to provide treatment to all.

Last week we set up a temporary dental clinic in a safe space for single women and their children, a place of shelter for them since the fires. These women have been suffering severe dental pain for too much time and our team treated urgent cases immediately. With more clinics planned in the future, we want to make sure everyone in this safe space has a happy and healthy smile.

It is Dr Ekkehard, our current dentist and president of [FCSM e.V. - Zahnmedizin für Lateinamerika](#) connected to us through [Dental - Emergency - Team](#), who made this all possible! Dr Ekkehard, we are delighted to have you with us for the next few weeks - the kindness you show to every patient you treat always inspires us. This is CMA's huge thank you for your compassion and commitment.

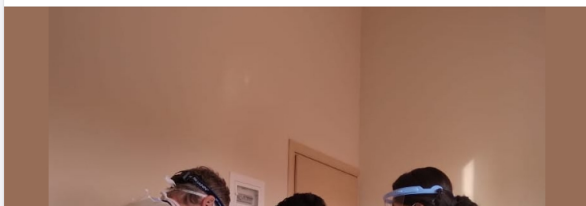
Are you a dentist who can help us out too? We still need dental volunteers on these dates:

27th November-7th of December

25th December- 4th of January

To apply email: greece.cma@gmail.com

To find our more visit <https://crisismanagementassociation.com/dental-project>





19 7 κοινοποιήσεις

Μου αρέσει! Σχόλιο Κοινοποίηση

Γράψτε ένα σχόλιο...

Crisis Management Association
13 Νοεμβρίου 2020

As the medical situation in the camp has evolved so have our operations and the services we provide.

We are proud to announce that we have started providing chronic pediatric care inside Kara Tepe 2. We are deeply committed to protecting the health of the camp's youngest residents and aim to give each of our little patients a safe and welcoming space in our clinic.

We would like to introduce our resident pediatrician Dr Carola. She previously worked in Moria for a year and half with MSF and loves working with children. Dr Carola hopes to keep working on missions like this in the future. We are honoured to have you on our team Carola!



32 2 κοινοποιήσεις

Μου αρέσει! Σχόλιο Κοινοποίηση

Γράψτε ένα σχόλιο...

Crisis Management Association
9 Νοεμβρίου 2020

Lack of access to dental care and pain relief has a terrible affect on the physical and mental health of the refugees on Lesbos. We believe everyone should be able to visit a dentist whenever they need and it is every person's right to receive quality and compassionate care.

Last week our dental team was joined by dentists Eva and Hisham from Germany, through our partner organisation [Dental - Emergency - Team](#) We want to personally thank you both for all your amazing work and medical care for refugees and asylum seekers in Lesbos.

Do you want to help refugees in Lesbos? We are still looking for qualified dentists to join us on the ground in November and December. Click the link below to find out more or email us at greece.cma@gmail.com
<https://crisismanagementassociation.com/dental-project>





19 1 σχόλιο 8 κοινοποιήσεις

Μου αρέσει! Σχόλιο Κοινοποίηση

Τα πιο σχετικά

Γράψτε ένα σχόλιο...

Jennifer Graf
Do you have the need for dental Hygienist, I live in the US ???

Μου αρέσει! Απάντηση 2 χρ.

Crisis Management Association
7 Νοεμβρίου 2020 · 🌐

The devastating fires in September meant that like many other organisations we lost a lot of our medical equipment when our clinic burned down. Since then we have been trying to restock and get our clinics back to full capacity.

This week [Swiss Barakah Charity](#) visited Lesvos and kindly donated equipment and supplies for our new pediatric clinic. Thank you Swiss Barakah Charity for all your support and dedication towards the refugee children of Lesvos. Your generous donation will allow us to continue to see our young patients and provided a high standard of service to them.



20 1 κοινοποίηση

Μου αρέσει! Σχόλιο Κοινοποίηση

Γράψτε ένα σχόλιο...

Ο χρήστης **Crisis Management Association** είναι με το χρήστη **Parnian Hashemi** και 4 ακόμη.
5 Νοεμβρίου 2020 · 🌐

Since we started, we've been lucky enough to link with many dedicated teams and individuals, local and international. Today CMA would like to say a huge thank you to two special organisations we've worked in close collaboration with.

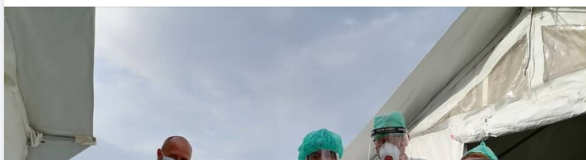
WHO Norwegian EMT arrived in Lesvos as a vital support during the COVID outbreak and September fires. The team worked tirelessly alongside us to stabilise the healthcare situation in the new camp, ensuring urgent medical care for those in need. Their logistical support and equipment were essential in our efforts to set up the new camps medical centre!

St Elizabeth University of Health and Social Work have been long term supporters of CMA, thanks to Maria Jackulková - an Assistant Professor, qualified nurse at the university and CMA's founding member. St Elizabeth's commitment to fundraising ensures our clinic stays active and their team of qualified doctors and nurses have supported CMA's operations in recent difficult times, enhancing our capacity and outreach!

Both teams left the island in the last two weeks and we want to repeat our message of sincerest thanks. Without your support, we couldn't reach so many vulnerable refugees and asylum seekers. It is always a pleasure to work alongside dedicated, skilled and compassionate teams because, when we work together in solidarity, we progress positively and our beneficiaries benefit.

Thank you WHO Norwegian EMT, St Elizabeth University of Health and Social Work and all other partners, supporters and donors - your help shows that we can build better systems when we collaborate with kindness!

By Ali Hashemi





45 2 σχόλια 11 κοινοποιήσεις

Μου αρέσει! Σχόλιο Κοινοποίηση

Τα πιο σχετικά

Γράψτε ένα σχόλιο...

Aman Habibi
Mária Jackulíková
Thanks dear for your hard working **you're the best** 🙏
Μου αρέσει! Απάντηση 2 χρ. 3

Mária Jackulíková
Thank you so much dear C.M.A. team 🙏 Was so nice to work with you because everyone of you is really amazing. Take care and see you in few month. With ❤️❤️❤️
Μου αρέσει! Απάντηση 2 χρ. 2

Γράψτε ένα σχόλιο...

Crisis Management Association
3 Νοεμβρίου 2020 · 🌐

⚠️ Urgent need! Please share! ⚠️

Refugees face another cold, catastrophic winter on Lesbos and vulnerable populations are always hit hardest. To respond to urgent medical needs on the new camp, Crisis Management Association has opened a new medical operation to provide critical care and medical relief to refugees. Healthcare is vital when the weather is harsh and the world is at risk of COVID19. C.M.A is calling for qualified dentists to join our team on Lesbos and use their skills to help those in need. Help us spread the word at this crucial time 🙏

Volunteer with us 📧 greece.cma@gmail.com
Visit our website 🌐 crisismanagementassociation.com

📷 camp photo by Yousif Alshewaili
📷 clinic photo by Ali Hashemi



33 83 κοινοποιήσεις

Μου αρέσει! Σχόλιο Κοινοποίηση

Γράψτε ένα σχόλιο...

Crisis Management Association
16 Οκτωβρίου 2020 · 🌐

Thank you for your support 🙏

Εισαγωγική κάρτα

CMA provides a humanitarian medical response to the refugees and asylum seekers in Lesvos, Greece.

📍 Σελίδα · Μη κερδοσκοπικός οργανισμός

📍 8i Noemvriou 24, Mitilíni, Greece

✉️ greece@crisismanagementassociation.com

🌐 crisismanagementassociation.com

🕒 Πάντα ανοιχτά ▾

★ Δεν έχει αξιολογηθεί ακόμα (0 κριτικές) ⓘ

Προτείνετε διορθώσεις

Φωτογραφίες

Δείτε όλες τις φωτογραφίες



Πληροφορίες για τα στατιστικά στοιχεία Σελίδων · Απόρρητο · Όροι χρήσης · Διαφημίσεις · Επιλογές διαφήμισης | > Cookies · Περισσότερα · Meta © 2023



Choose Love

16 Οκτωβρίου 2020 · 🌐

Winter is just around the corner on the Greek islands, but thanks to your incredible generosity more people will stay safe.

The last week has seen heavy rains and strong winds battering the new camp on Lesvos. Home to 7,500 people, this camp was hastily built by Greek authorities following the destruction of Moria camp in September. Conditions are woefully inadequate.

Your support of our recent crowdfunder means that our partners [Crisis Management Association](#), [Kitrinos Healthcare](#) and [Healthbridge Medical Organization](#), amongst other brilliant medical actors, have been able to respond to medical emergencies as quickly as possible.

To better protect tents from the weather, our partners [@movementonthegroundofficial](#), [watershed foundation](#), [Refugee 4 Refugees](#) and [Because We Carry](#) have been installing tarpaulins, securing and fixing tents, digging drainage channels, placing sandbags to prevent flooding, distributing thousands of waterproofs and buying pallets to install underneath tents, ensuring they are lifted off the cold, wet ground.

Supporting pregnant women, new mothers and newborns, our partner [Because We Carry](#) are distributing nappies and other essential supplies, and ensuring more people stay warm as temperatures drop, [Attika Human Support](#), [One Happy Family - Community Center, Lesvos](#) and [Team Humanity](#) have been providing warm winter clothes.

No one should be forced to live in these conditions. That's why we continue to support legal and protection projects like [Fenix Humanitarian Legal Aid](#), [Legal Centre Lesvos](#), [borderline europe - Menschenrechte ohne Grenzen e.V.](#) and [Together for Better Days](#) who work to get people reunited with family and transferred to safety.

Europe has condemned thousands to suffer winter in this camp. Sign and share the petition calling on EU leaders and [European Commission](#) to take urgent action: <https://www.change.org/firemoriacamp>

👍 13

👍 Μου αρέσει!

💬 Σχόλιο

🔗 Κοινοποίηση



Γράψτε ένα σχόλιο...



Crisis Management Association

15 Οκτωβρίου 2020 · 🌐



Η Σελίδα Crisis Management Association ενημέρωσε τη διεύθυνση του ιστότοπού της.

Μάθετε περισσότερα

👍 18

👍 Μου αρέσει!

💬 Σχόλιο

🔗 Κοινοποίηση



Γράψτε ένα σχόλιο...